



Union-Tribune

sandiegouniontribune.com

FRIDAY • AUGUST 13, 2021

FDA OKs COVID-19 VACCINE BOOSTER FOR SOME

Third shot could give immunocompromised people greater protection

BY LAURIE MCGINLEY & LENA H. SUN

WASHINGTON

Regulators took steps Thursday to shore up the defenses of millions of vulnerable Americans against the coronavirus, authorizing extra doses of two widely used vaccines for some people with weakened immune systems.

The action by the Food and Drug Administration means that additional shots could be available as soon as this weekend for patients who have received organ transplants or have certain types of cancer or other illnesses.

The move was applauded by medical experts worried about patients unable to generate robust anti-virus responses even after being fully vaccinated. Details about how the shots will be administered — and who exactly will be eligible for them — are expected to be hashed out today during a meeting of Centers for Disease Control and Prevention advisers.

The FDA authorization came as Biden administration officials appear increasingly convinced that boosters for the broader population will be necessary. Officials are scrutinizing data on the vaccines' durability and discussing when extra shots might need to be administered and which groups might get priority, according to federal officials who spoke on the condition of SEE **VACCINE • A10**

EX-LA JOLLA TV EXEC TO PLEAD GUILTY IN COLLEGE BRIBERY CASE

Elisabeth Kimmel, who owned KFMB stations, to ask for 6 weeks in prison

BY KRISTINA DAVIS

A former La Jolla television executive whose prosecution in the sweeping college admissions bribery scandal was barreling toward trial has agreed to plead guilty, according to a letter filed in Boston federal court Thursday.

Elisabeth Kimmel, 57, has agreed to plead guilty to one count of conspiracy to commit mail and wire fraud via video-conference at a hearing set for Monday.

According to the deal, prosecutors and Kimmel's defense have agreed to recommend a sentence of six weeks in prison and a year of home confinement, plus a \$250,000 fine and 500 hours of community service. However, a judge will ultimately determine the sentence and could depart from the joint recommendation.

Kimmel, who once owned KFMB stations as part of her family-owned Midwest Television Inc., now lives in Las Vegas. She is accused of paying \$475,000 in bribes to get her two children into Georgetown University and the University of Southern California through a "side door" as athletic recruits for sports they didn't play, according to the charging document.

The mastermind of the scheme is William "Rick" Singer, who operated a for-profit college counseling and preparation business in Newport Beach. Singer had curated relationships with administrative officials and athletic SEE **BRIBERY • A8**



Elisabeth Kimmel



K.C. ALFRED U-T

People walk along the boardwalk in Mission Beach on Thursday. U.S. Census Bureau data from the 2020 count show San Diego County's population grew by more than 6 percent to just under 3.3 million people, and it's more diverse than in 2010.

CENSUS: GAINS IN COUNTY'S LATINO, ASIAN POPULATIONS

Data shows lower numbers of White, Black residents as San Diego's redistricting efforts get under way

BY LAURYN SCHROEDER & JEFF MCDONALD

The Latino and Asian populations in San Diego County increased by double digits over the past 10 years, according to new data released by the U.S. Census Bureau on Thursday, raising the likelihood that those communities could play a larger role in electing candidates to public office once new district boundaries are drawn.

Meanwhile, the number of Blacks and Whites both declined, even as the county population jumped by more than 6 percent to just under 3.3 million people.

The latest census data showed that most communities of color represent a larger share of the American population than ever before, continuing a trend that began generations ago and the expectation it will push forward years into the future.

34%

Approximate Latino population in the county, an increase of about 13 percent from 2010

In San Diego County, Latinos now make up more than one-third of the overall population. Census data from 2020 show there are 128,281 more Latinos in the county than in 2010, when the last national census was completed. The Asian population increased by more than 20 percent to some 400,589 people, representing about 12 percent of all county residents.

Data show San Diego County's two or more races population, also known as the multiracial population, nearly doubled since 2010, mirroring a trend seen nationwide.

A decade ago, there were some 9 million multiracial people living

12%

Approximate Asian population in the county, an increase of about 22 percent from 2010

in the U.S. The 2020 data show the total has more than tripled to 33.8 million.

The data released Thursday show the county's White population decreased by some 77,842 residents, a 5 percentage-point drop from 2010. They now represent about 43 percent of the county. The Black population decreased by some 1,586 people, the census found, and now represents about 4 percent of the population.

Statewide, Whites are no longer the largest ethnicity, census data show. Of the 39.5 million California residents recorded in the 2020 census, Latinos represent nearly 40

percent, more than any other ethnicity. About 35 percent of the population is White, 15 percent is Asian, 5 percent is Black and 4 percent is multiracial.

The data, which was delayed for months as federal census officials struggled to collate hundreds of millions of responses collected over the past year-plus, is critical to the redistricting efforts that will affect local, state and federal elections next year.

Redistricting officials will now begin analyzing the bulk data to help draw new boundaries for seats on everything from local city councils and school boards to state legislatures and congressional districts.

Earlier this year, the U.S. Census Bureau announced its initial findings: the population of the United States was set at 331.4 million.

That number was used to calculate SEE **CENSUS • A6**

U.S. DEPLOYS TROOPS TO ASSIST EVACUATION AS TALIBAN SURGE

White House bracing for possible collapse of Afghan government

BY THOMAS GIBBONS-NEFF, HELENE COOPER, LARA JAKES & ERIC SCHMITT

KABUL, Afghanistan

The Pentagon is moving 3,000 Marines and soldiers to Afghanistan and another 4,000 troops to the region to evacuate most of the U.S. Embassy and American citizens in Kabul, as the Biden administration braces for a possible collapse of the Afghan government within the next month, administration and military officials said.

The sharply deteriorating situation in the country, as the Taliban rapidly advance across the north and Afghan security forces battle to defend territory in the south and west, has forced the Biden administration to accelerate plans to get Americans out.

President Joe Biden, after meeting with his top national security advisers Wednesday night and again Thursday morning, also ordered additional expedited flights out of the country for Afghans who have worked with the United States, so that their applications for special immi-



PAULA BRONSTEIN GETTY IMAGES

Displaced Afghans from the northern provinces are evacuated from a makeshift camp Thursday to safer spots in Kabul.

grant visas could be evaluated.

The embassy sent the latest in a series of alarming alerts, urging Americans to "leave Afghanistan immediately using available commercial flight options."

And in Washington, State Department spokesperson Ned Price announced what he described as a drawdown of an unspecified number of civilians among the roughly 4,000 embassy personnel — including

about 1,400 American citizens — to begin immediately.

"As we've said all along, the increased tempo of the Taliban military engagements and the resulting increase in violence and instability across Afghanistan is of grave concern," he said. "We've been evaluating the security situation every day to determine how best to keep those serving at our embassy safe."

SEE **TALIBAN • A8**

ILLEGAL BORDER CROSSINGS IN JULY REACHED 21-YEAR HIGH, DATA SHOWS

Number of children arriving unaccompanied hits record of 18,962

U-T NEWS SERVICES

The number of migrant encounters along the Mexico border crossed a new threshold last month, exceeding 200,000 for the first time in 21 years, according to U.S. Customs and Border Protection enforcement data released Thursday.

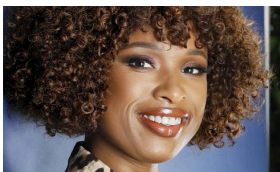
Among the migrants taken into U.S. custody in July were 82,966 family members and 18,962 unaccompanied teenagers and children, an all-time high. The unaccompanied minors' custody requirements have once more overwhelmed the Biden administration as it struggles to care for them safely in the middle of the pandemic.

At a news conference in Brownsville, Texas, Homeland Security Secretary Alejandro Mayorkas said border agents logged 212,672 encounters with migrants along the U.S.-Mexico border in July, a 13 percent increase from SEE **BORDER • A9**

NIGHT & DAY

HEART AND SOUL

Oscar winner Jennifer Hudson portrays singer Aretha Franklin in the new movie "Respect."



U-T INDEX

Comics	C5	Editorial	B6	Local	B1	Stocks	C3
Crossword	C7	Horoscope	C7	Obituaries	B8	Television	ND18
Dear Abby	C7	Letters	B6	Sports	D1	Weather	A12



7 35944 00074 7

2020 Census reveals a more diverse county

Double-digit increases in Latino and Asian populations were the primary drivers of San Diego County's population growth over the past decade, according to statistics released Thursday by the U.S. Census Bureau. Meanwhile, the numbers of Blacks and Whites declined, according to the 2020 Census figures. San Diego County's two or more races population, also known as the multiracial population, nearly doubled since 2010, mirroring a trend seen nationwide. Redistricting officials will now begin analyzing the census results to help draw new boundaries for seats for everything from local city councils and school boards to state legislatures and congressional districts.

CARLSBAD 2010: 105,328 2020: 114,746					
Race/ethnicity	Total population		Percent of population		
	2010	2020	2010	2020	
White	78,879	79,201	74.9%	69.0%	🔴
Black	1,232	1,231	1.2%	1.1%	🔴
Hispanic/Latino	13,988	17,302	13.3%	15.1%	🟢
Asian	7,336	9,004	7.0%	7.8%	🟢
American Indian/Alaska Native	271	259	0.3%	0.2%	🔴
Native Hawaiian/Pacific Islander	182	196	0.2%	0.2%	⚪
Other	235	624	0.2%	0.5%	🟢
Two or more	3,205	6,929	3.0%	6.0%	🟢

DEL MAR 2010: 4,161 2020: 3,954					
Race/ethnicity	Total population		Percent of population		
	2010	2020	2010	2020	
White	3,772	3,282	90.7%	83.0%	🔴
Black	9	16	0.2%	0.4%	🟢
Hispanic/Latino	175	274	4.2%	6.9%	🟢
Asian	115	145	2.8%	3.7%	🟢
American Indian/Alaska Native	2	2	0.0%	0.1%	🟢
Native Hawaiian/Pacific Islander	1	4	0.0%	0.1%	🟢
Other	11	26	0.3%	0.7%	🟢
Two or more	76	205	1.8%	5.2%	🟢

ESCONDIDO 2010: 143,911 2020: 151,038					
Race/ethnicity	Total population		Percent of population		
	2010	2020	2010	2020	
White	58,142	50,693	40.4%	33.6%	🔴
Black	3,046	3,267	2.1%	2.2%	🟢
Hispanic/Latino	70,326	78,226	48.9%	51.8%	🟢
Asian	8,491	11,650	5.9%	7.7%	🟢
American Indian/Alaska Native	577	479	0.4%	0.3%	🔴
Native Hawaiian/Pacific Islander	306	325	0.2%	0.2%	⚪
Other	201	664	0.1%	0.4%	🟢
Two or more	2,822	5,734	2.0%	3.8%	🟢

LEMON GROVE 2010: 25,320 2020: 27,627					
Race/ethnicity	Total population		Percent of population		
	2010	2020	2010	2020	
White	8,787	7,479	34.7%	27.1%	🔴
Black	3,277	3,174	12.9%	11.5%	🔴
Hispanic/Latino	10,435	12,850	41.2%	46.5%	🟢
Asian	1,545	2,360	6.1%	8.5%	🟢
American Indian/Alaska Native	109	81	0.4%	0.3%	🔴
Native Hawaiian/Pacific Islander	244	228	1.0%	0.8%	🔴
Other	38	154	0.2%	0.6%	🟢
Two or more	885	1,301	3.5%	4.7%	🟢

POWAY 2010: 47,811 2020: 48,841					
Race/ethnicity	Total population		Percent of population		
	2010	2020	2010	2020	
White	33,041	28,896	69.1%	59.2%	🔴
Black	722	663	1.5%	1.4%	🔴
Hispanic/Latino	7,508	9,017	15.7%	18.5%	🟢
Asian	4,750	6,643	9.9%	13.6%	🟢
American Indian/Alaska Native	149	81	0.3%	0.2%	🔴
Native Hawaiian/Pacific Islander	101	107	0.2%	0.2%	⚪
Other	74	240	0.2%	0.5%	🟢
Two or more	1,466	3,194	3.1%	6.5%	🟢

SANTEE 2010: 47,811 2020: 48,841					
Race/ethnicity	Total population		Percent of population		
	2010	2020	2010	2020	
White	39,312	37,783	73.6%	62.9%	🔴
Black	971	1,265	1.8%	2.1%	🟢
Hispanic/Latino	8,699	12,522	16.3%	20.9%	🟢
Asian	1,974	3,456	3.7%	5.8%	🟢
American Indian/Alaska Native	290	226	0.5%	0.4%	🔴
Native Hawaiian/Pacific Islander	232	279	0.4%	0.5%	🟢
Other	81	410	0.2%	0.7%	🟢
Two or more	1,854	4,096	3.5%	6.8%	🟢

Racial data is non-Hispanic Hispanic/Latinos may be of any race. Percentages may not equal 100 because of rounding.
Source: U.S. Census Bureau

CENSUS

FROM **A1** culate the number of seats in the U.S. House of Representatives that each state will have through the next decade. California lost a seat for the first time in state history, dipping to 52 House members.

“Up to now, we’ve only known how much the populations of the states changed over the previous decade,” said Jack Pitney, a political science professor at Claremont McKenna College.

“Those numbers were important because they determined which states would gain or lose seats in the House,” he said. “The earlier numbers were like headshots taken from 100 yards away. These numbers will be a close-up.”

Census data show all but one of the congressional districts in San Diego County saw an increase Latinos who are eligible to vote, and all but two saw a decrease in White residents age 18 years or older.

In the 50th Congressional District — a longtime Republican stronghold that includes parts of East County, communities in inland North County, and a southern portion of Riverside County — there are 33,100 fewer White voters than there were a decade ago. The area also saw a more than 50 percent decrease in Asians



K.C. ALFRED U-T

Population and demographics data in the census are crucial to how government revenue is distributed.

over the age of 17.

Meanwhile, the number of Latino voters grew by nearly 60 percent and those of two or more races more than doubled.

No one from the Republican Party of San Diego County agreed to comment on the new census data, but local Democratic Party officials said they would rely on the numbers to guide them into the future.

“We are going to see a lot more representation from those minority communities, or at least we should,” said Will Rodriguez Kennedy, chairman of the San Diego County Democratic Party.

“Our party is going to re-focus on making sure we are representative and reflect the diversity across this county,” Kennedy said.

“You’ll see an investment in recruiting, empowering and engaging Latino and AAPI (Asian-American Pacific Islander) communities, and also protecting representation for the Black community, which is under-represented and needs a special focus.”

In the 51st District, which is currently represented by Democratic Congressman Scott Peters, the White and Latino voting population grew by less than 1 percent combined, while voters of two or more races nearly quadrupled and those who identify as some other race more than doubled.

The release of the federal census data comes none too soon for redistricting officials across the nation, and in San Diego County.

Local officials began col-

SAN DIEGO COUNTY

Population			Housing units		
2010		3,095,313	2010		1,164,786
2020		3,298,634	2020		1,228,505
Race/ethnicity					
Race/ethnicity	Total population		Percent of population		
	2010	2020	2010	2020	
White	1,500,047	1,422,205	48.5%	43.1%	🔴
Black	146,600	145,014	4.7%	4.4%	🔴
Hispanic/Latino	991,348	1,119,629	32.0%	33.9%	🟢
Asian	328,058	400,589	10.6%	12.1%	🟢
American Indian/Alaska Native	14,098	12,841	0.5%	0.4%	🔴
Native Hawaiian/Pacific Islander	13,504	12,991	0.4%	0.4%	⚪
Other	6,715	18,125	0.2%	0.5%	🟢
Two or more	94,943	167,240	3.1%	5.1%	🟢

VISTA 2010: 105,328 2020: 114,746					CORONADO 2010: 18,912 2020: 20,192				
population		Percent of population			Total population		Percent of population		
2010	2020	2010	2020		2010	2020	2010	2020	
41	43,720	20.4%	15.9%	🔴	15,016	14,275	79.4%	70.7%	🔴
72	12,703	4.1%	4.6%	🟢	370	607	2.0%	3.0%	🟢
66	164,698	58.2%	59.8%	🟢	2,302	3,406	12.2%	16.9%	🟢
31	40,841	13.8%	14.8%	🟢	547	613	2.9%	3.0%	🟢
0	488	0.2%	0.2%	⚪	75	53	0.4%	0.3%	🔴
5	1,140	0.5%	0.4%	🔴	51	41	0.3%	0.2%	🔴
0	1,175	0.1%	0.4%	🟢	28	113	0.1%	0.6%	🟢
91	10,722	2.7%	3.9%	🟢	523	1,084	2.8%	5.4%	🟢

ON 2010: 99,478 2020: 106,215					ENCINITAS 2010: 59,518 2020: 62,007				
population		Percent of population			Total population		Percent of population		
2010	2020	2010	2020		2010	2020	2010	2020	
2	56,116	56.8%	52.8%	🔴	46,881	45,642	78.8%	73.6%	🔴
9	6,664	6.0%	6.3%	🟢	316	281	0.5%	0.5%	⚪
6	31,271	28.2%	29.4%	🟢	8,138	9,357	13.7%	15.1%	🟢
5	5,006	3.4%	4.7%	🟢	2,291	2,634	3.8%	4.2%	🟢
5	328	0.5%	0.3%	🔴	159	115	0.3%	0.2%	🔴
0	418	0.4%	0.4%	⚪	81	64	0.1%	0.1%	⚪
1	613	0.3%	0.6%	🟢	184	391	0.3%	0.6%	🟢
0	5,799	4.5%	5.5%	🟢	1,468	3,523	2.5%	5.7%	🟢

AL BEACH 2010: 26,324 2020: 26,137					LA MESA 2010: 57,065 2020: 61,121				
population		Percent of population			Total population		Percent of population		
2010	2020	2010	2020		2010	2020	2010	2020	
56,116	56,116	36.0%	33.3%	🔴	35,295	32,644	61.9%	53.4%	🔴
6,664	6,664	4.0%	3.3%	🔴	4,102	3,954	7.2%	6.5%	🔴
31,271	31,271	49.0%	51.1%	🟢	11,696	15,686	20.5%	25.7%	🟢
5,006	5,006	6.2%	5.7%	🔴	3,152	3,935	5.5%	6.4%	🟢
328	328	0.5%	0.4%	🔴	249	187	0.4%	0.3%	🔴
418	418	0.6%	0.5%	🔴	272	312	0.5%	0.5%	⚪
613	613	0.2%	0.5%	🟢	160	350	0.3%	0.6%	🟢
5,799	5,799	3.5%	5.2%	🟢	2,139	4,053	3.7%	6.6%	🟢

NATIONAL CITY 2010: 58,582 2020: 56,173					OCEANSIDE 2010: 167,086 2020: 174,068				
population		Percent of population			Total population		Percent of population		
2010	2020	2010	2020		2010	2020	2010	2020	
2	4,470	11.7%	8.0%	🔴	80,849	78,444	48.4%	45.1%	🔴
0	1,996	4.5%	3.6%	🔴	7,101	6,456	4.2%	3.7%	🔴
11	37,086	63.0%	66.0%	🟢	59,947	63,316	35.9%	36.4%	🟢
01	10,813	17.8%	19.2%	🟢	10,638	12,759	6.4%	7.3%	🟢
8	108	0.3%	0.2%	🔴	613	503	0.4%	0.3%	🔴
3	275	0.7%	0.5%	🔴	1,999	1,886	1.2%	1.1%	🔴
7	163	0.1%	0.3%	🟢	347	1,030	0.2%	0.6%	🟢
0	1,262	1.9%	2.2%	🟢	5,592	9,674	3.3%	5.6%	🟢

SAN DIEGO 2010: 1,307,402 2020: 1,386,932					SAN MARCOS 2010: 83,781 2020: 94,833				
population		Percent of population			Total population		Percent of population		
2010	2020	2010	2020		2010	2020	2010	2020	
589,702	565,128	45.1%	40.7%	🔴	40,736	41,989	48.6%	44.3%	🔴
82,497	77,542	6.3%	5.6%	🔴	1,756	1,898	2.1%	2.0%	🔴
376,020	411,286	28.8%	29.7%	🟢	30,697	34,878	36.6%	36.8%	🟢
204,347	243,438	15.6%	17.6%	🟢	7,363	10,185	8.8%	10.7%	🟢
3,545	3,200	0.3%	0.2%	🔴	255	189	0.3%	0.2%	🔴
5,178	4,887	0.4%	0.4%	⚪	289	253	0.3%	0.3%	⚪
3,293	8,208	0.3%	0.6%	🟢	196	525	0.2%	0.6%	🟢
42,820	73,243	3.3%	5.3%	🟢	2,489	4,916	3.0%	5.2%	🟢

SOLANA BEACH 2010: 12,867 2020: 12,941			
--	--	--	--